



# Harmes Turner Brown

Swan Walk, Shepperton, TW17 8LY



**£550,000 Leasehold**

**\*\*OPEN DAY SATURDAY 9TH\*\***. Located on the first floor of this sought-after riverside development, this beautifully presented apartment enjoys stunning, uninterrupted views directly over the River Thames. The accommodation offers a bright and spacious layout, with a generous open-plan living and dining area that opens onto two private balconies, both perfect for enjoying the picturesque setting. There are two double bedrooms, including a principal bedroom with built-in storage and a sleek en-suite shower room, plus a modern family bathroom. Further benefits include residents' parking, and a private garage—a rare and valuable feature not often found in similar properties. This is a fantastic opportunity to secure a riverside home with exceptional views and excellent amenities. NO CHAIN + GARAGE **\*\*RARE\*\***

INDEPENDENT ESTATE AGENTS

[www.htbproperty.com](http://www.htbproperty.com)

SALES • LETTINGS • MANAGEMENT

Walton Branch  
45A High Street  
Walton on Thames  
Surrey KT12 1DH  
01932 222266

[sales@htbproperty.com](mailto:sales@htbproperty.com)  
[lettings@htbproperty.com](mailto:lettings@htbproperty.com)



Registered address: 2 AC Court, Hight Street, Thames Ditton KT7 0SR Registered in England, Number 6433673

Molesey Branch  
45 Walton Road  
East Molesey  
Surrey KT8 0DP  
0208 001 8385

INDEPENDENT ESTATE AGENTS

[www.htbproperty.com](http://www.htbproperty.com)

SALES • LETTINGS • MANAGEMENT

Walton Branch  
45A High Street  
Walton on Thames  
Surrey KT12 1DH  
01932 222266

[sales@htbproperty.com](mailto:sales@htbproperty.com)  
[lettings@htbproperty.com](mailto:lettings@htbproperty.com)

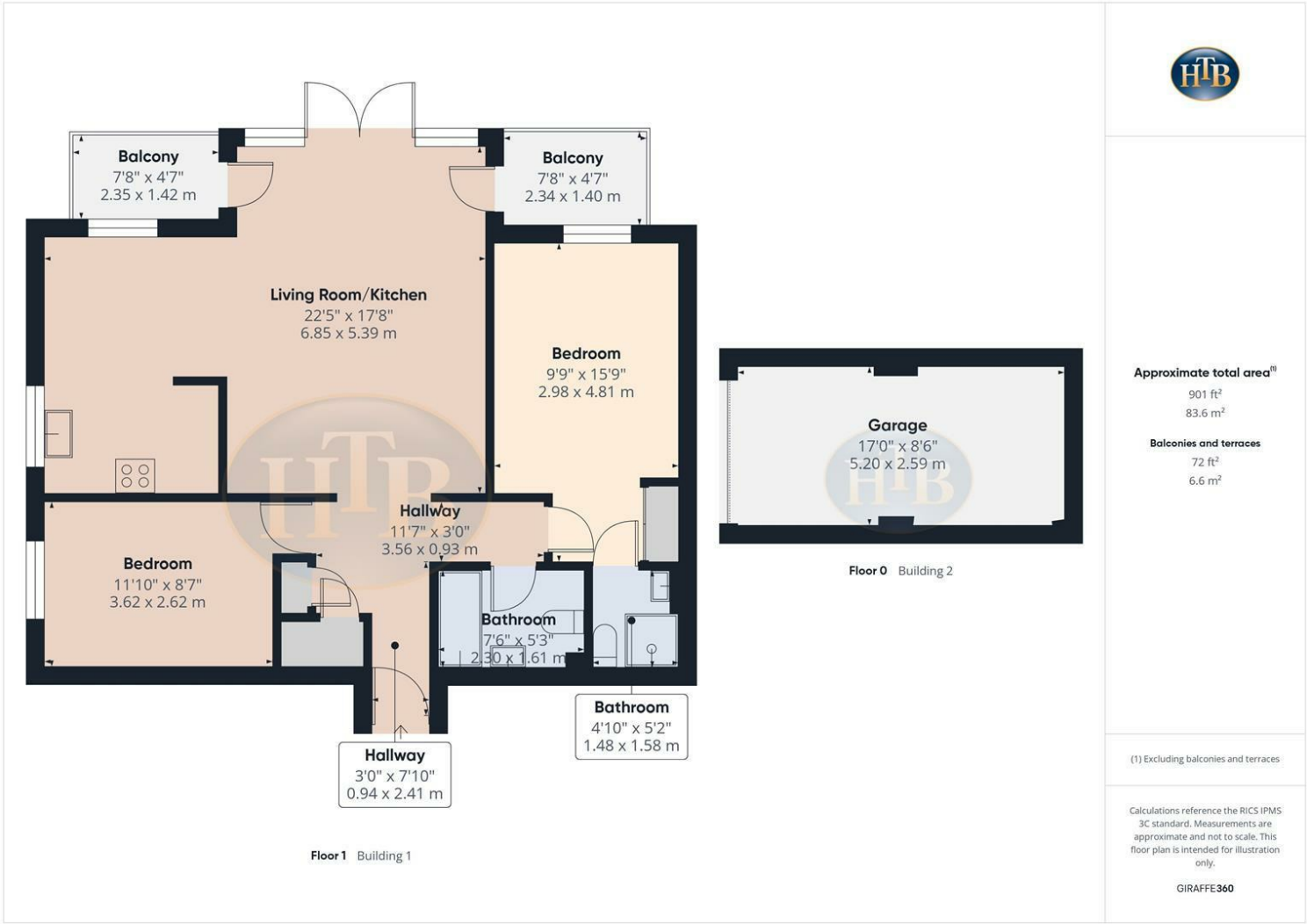


Registered address: 2 AC Court, Hight Street, Thames Ditton KT7 0SR Registered in England, Number 6433673

Molesey Branch  
45 Walton Road  
East Molesey  
Surrey KT8 0DP  
0208 001 8385



Swan Walk, Shepperton, TW17 8LY



- FIRST FLOOR APARTMENT WITH DIRECT, UNINTERRUPTED RIVER VIEWS
  - TWO GENEROUS DOUBLE BEDROOMS
  - SPACIOUS OPEN-PLAN LIVING AND DINING AREA
  - RESIDENTS' PARKING INCLUDED
  - NO CHAIN
- TWO PRIVATE BALCONIES OVERLOOKING THE THAMES
  - PRINCIPAL BEDROOM WITH EN-SUITE SHOWER ROOM
  - MODERN FITTED KITCHEN
  - RARE PRIVATE GARAGE WITHIN THE DEVELOPMENT

